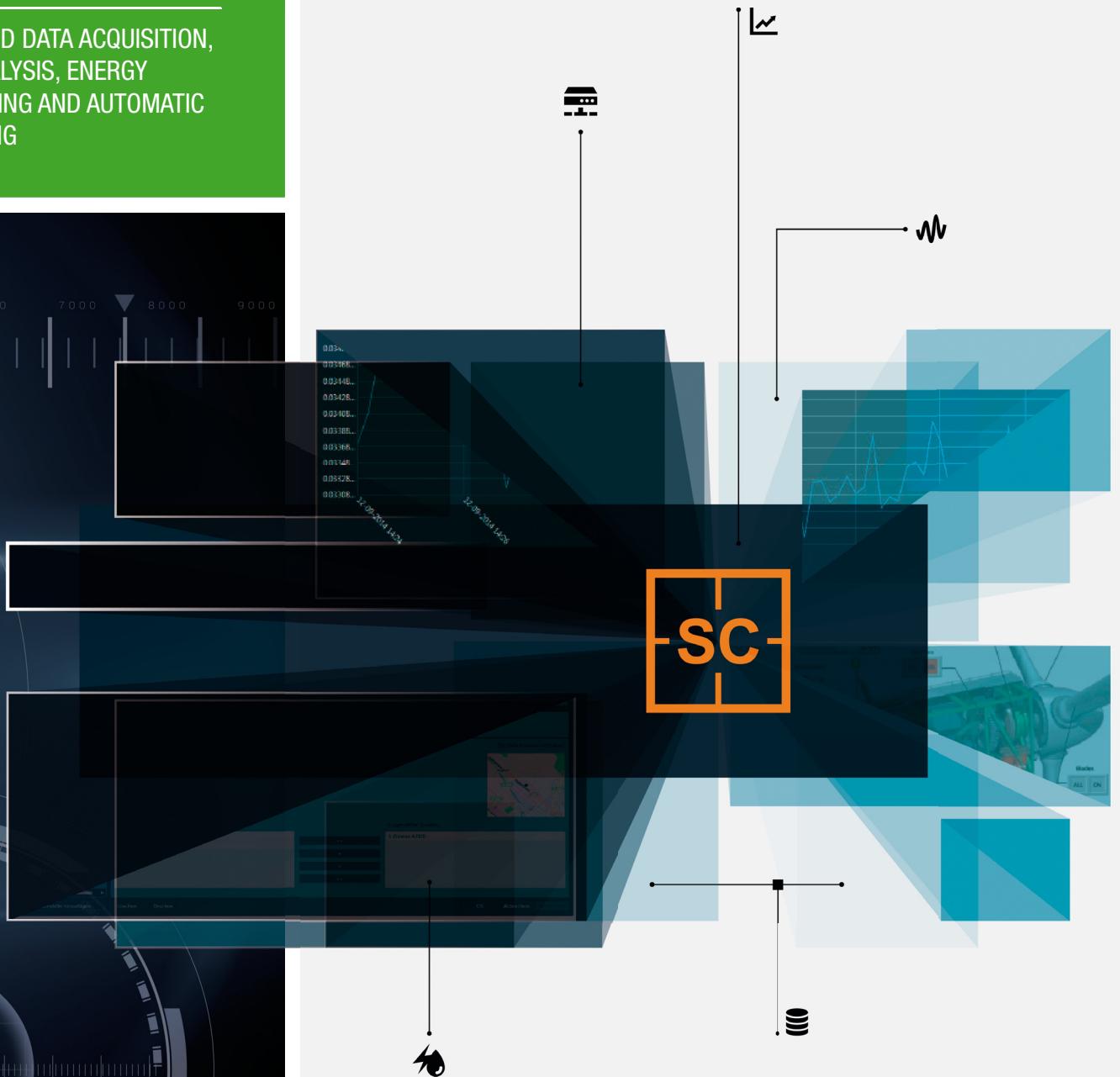


DATA MANAGEMENT SOFTWARE

MEASURED DATA ACQUISITION,
DATA ANALYSIS, ENERGY
MONITORING AND AUTOMATIC
REPORTING



SMARTCOLLECT

PM10 • PM20 • PM30



High-performance measured data acquisition, data analysis, energy monitoring and automatic reporting software



DATA MANAGEMENT – COMPLICATED IS A THING OF THE PAST

SMARTCOLLECT is a data management software for easy and safe measured data acquisition as well as data analysis focussing on energy management.

SMARTCOLLECT acquires, stores, visualises, evaluated as well as automatically reports all relevant consumption data of power, water, gas or heat.

A modern graphic user interface permits intuitive and easy operation even in numerous measuring points. Functions and measuring points may be very easily supplemented at any time due to the modular design.

HIGH-PERFORMANCE

SMARTCOLLECT acquires measured data of the most varied devices in an easy manner and stores the same in an open SQL database. The software offers basic functionalities for data analysis and for easy energy monitoring.

Acquired data may be combined in reports, stored or automatically forwarded.

Further extension stages also acquire and visualise system quality data and include it in an EN50160 report.

The SCADA module permits the comprehensive graphical visualisation of plant, processes and procedures.

INTUITIVE

A sophisticated graphic user interface facilitates the easy and yet extensive operation of the software. The software may be used to its entire extent after a brief familiarisation period without any specific previous knowledge.

MODULAR

The scope of performance of the software in relation to functionality as well as the number measuring points may be easily extended at any time. This does not impair the data already obtained.

APPLICATION

The powerful SMARTCOLLECT software has been particularly designed for applications in energy business and industry as well as for service providers and public authorities. The software measures, stores and visualises all of the relevant consumption data of current, gas, water or heat. This results in the following benefits:

TRANSPARENCY

Overall energy consumption view of the acquired media as well as the allocation to individual consumers.

RECOGNITION OF WEAK POINTS

The comprehensive visualisation and reporting functions recognise and show weak points.

OPTIMISATION

Proposals for improvement measures may be evaluated on basis of recognised weak points.

COST REDUCTION

The identification and realisation of recognised saving potentials reduce costs.

YOUR BENEFIT AT A GLANCE

USER-FRIENDLY AND FLEXIBLE

SMARTCOLLECT is very easily installed on computers with current Windows operating systems. The free-of-charge SQL Express is used as a database.

The clear hierarchical structure and easy menu guidance with integrated help functions of the Graphic User Interfaces facilitate an intuitive operation after a brief familiarisation period. Well-arranged visualisation contributes to user friendliness.

MODULAR DESIGN - LOW COSTS

The modularly designed software and licence model facilitates easy system expansion and may be adapted to your individual requirements.

VERSATILE USE

SMARTCOLLECT facilitates the flexible acquisition, storage and visualisation of all energy data (e.g. electrical energy) as well as different material flows like gas, steam, water through to heat quantities. Via the Modbus interface, not only Camille Bauer and Gossen Metrawatt products but also instruments of the most varied manufacturers may be connected.

COMPETENT SUPPORT

Camille Bauer supports you with a comprehensive service offer from training programs, consultation services through to its customer support which is available world-wide.

INFORMATION - WORLD-WIDE

SMARTCOLLECT Client facilitates local or world-wide access to the data archived in the SMARTCOLLECT database. The web access allows for working in any locations at any time. The software is multilingual (DE, EN, FR, IT, ES, NL, CZ and CN). The language is very easily switched during operation.

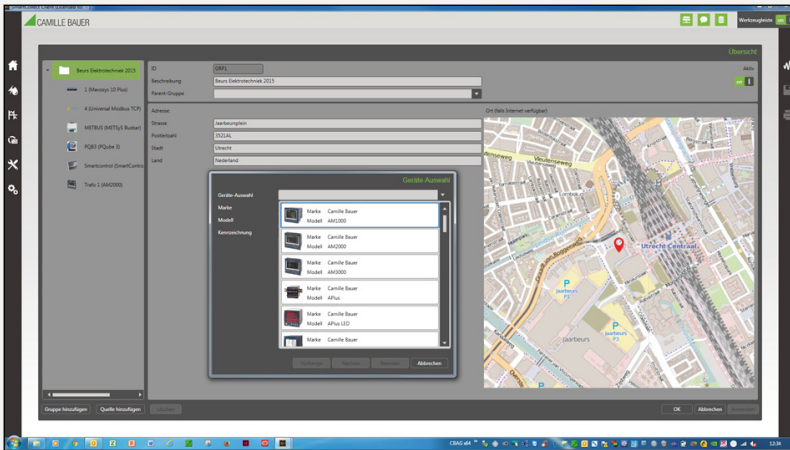
SMARTCOLLECT- EASY AND HIGH PERFORMANCE

- Easy data communication via Modbus RTU / TCP, ECL and SmartControl-Direct
- Connection also via OPC
- Devices of Camille Bauer and Gossen Metrawatt are already predefined and selectable in the software
- Open for the devices of all manufacturers
- Data is stored in an open SQL database
- Modular cost / performance model – basic version may be extended at any time

SMARTCOLLECT - MODULES

PM10 - BASIC MODULE

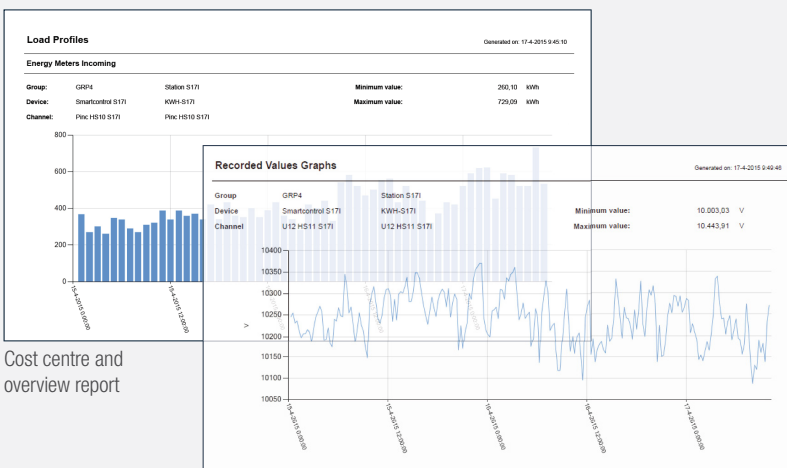
The basic PM10 module acquires measured data in an easy manner and stores it in an open SQL database. The module offers basic functionalities for data analysis and smooth energy monitoring and facilitates the preparation and dispatch of reports. Employing a sophisticated graphic user interface, SMARTCOLLECT provides clearly arranged software and is easily operated.



Easy device selection

Camille Bauer and Gossen Metrawatt devices are easily and quickly integrated using merely a few clicks.

Users select the desired device from a list of all devices and mark the variable to be measured by a mouse click.



Cost centre and overview report

Energy data may be allocated to cost centres and merged into reports in relation to a desired period of time. Variables like temperature, voltages or currents may be visualised in an overview report. Users can store these reports or forward them automatically via email.

PM20 - POWER QUALITY

The PM20 module extends the basic PM10 module by varied visualising and analysis options for system quality instruments. The PQDIFF files of system quality instruments are imported, converted and written into the database. Measured data may be issued as a report according to EN50160.

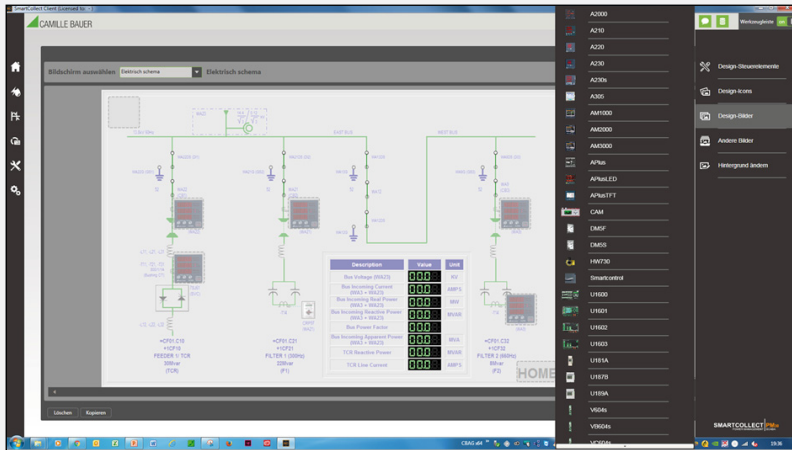


Data visualising of different measured values

After the export of PQDIFF files from the system quality instrument, they are both unpacked and stored in the database and may also be stored on a hard disk in original format, if required. The PM20 module graphic interface permits visualising of the most varied measured values of an instrument.

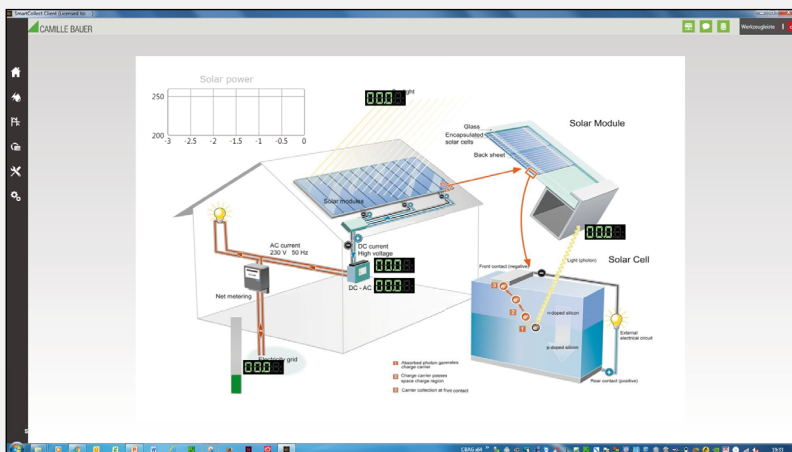
PM30 - VISUALISATION

The PM30 module, in turn, builds on the PM20 module and supplements it to visualise plants, processes and procedures. Individual images, diagrams or drawings with live measured data, switching statuses and limit values may be linked to develop extensive visualising.



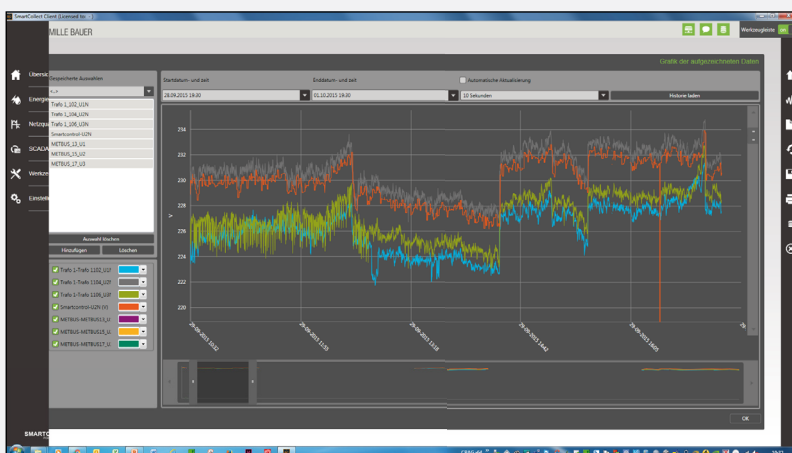
SCADA designer

Using the integrated designer, any background can be extended to become an individual SCADA overview image. Digital displays, analog indicators, signal lamps, switches, charts and many more items may be arranged as desired and inserted in the image.



Visualising of a photovoltaic plant

Several SCADA images may be linked to each other, so that a change from one image to the next can be realised in the visualising mode. This enables more extensive visualisations than in a static picture, e.g. zooming into an image or running through a plant or building.



Display of the measured value progression of different measured variables of various devices

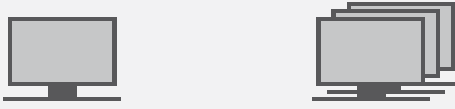
The high-performance graphic interface of the PM30 module permits simultaneous visualising of several measured data of the most varied devices in a graph. Curve shapes and the type of visualising may be individually adapted.

MODULAR DESIGN

SMARTCOLLECT CLIENT

MORE CLIENTS POSSIBLE

SMARTCOLLECT CLIENT



- Graphic visualisation of queried data
- Export via Excel file
- User interface to define the data sources to be read out as well as error and warning messages via email.

SQL DATABASE



SMARTCOLLECT DATABASE

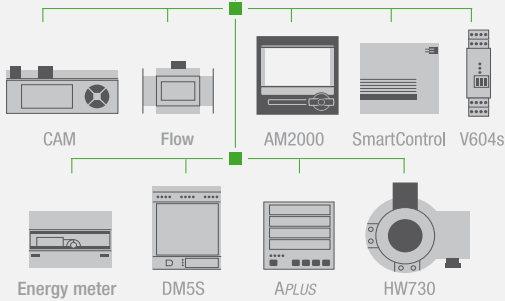
- SQL database
- Contains the collected data
- Open and unencrypted

SMARTCOLLECT SERVER



SMARTCOLLECT SERVER

- Collects and configures data from active sources and channels and writes the same directly into the central database.



SMARTCOLLECT software components may be installed on an individual system or on several servers or computers.



CONNECTION POSSIBILITIES

Camille Bauer is your competent partner and offers a wide spectrum of products for effective energy data management from the acquisition level through to the management level. The SMARTCOLLECT software acquires, stores and presents not only electrical measured variables but also variables like gas, water and heat quantities. The instrument data may be integrated either directly via Ethernet TCP/IP, Modbus RTU (RS485) or via a data collector like SmartControl.

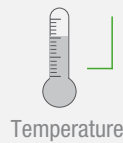
Data collector SmartControl



SMARTCOLLECT



Analog, SMS, Email, GSM, Alarm signal



Temperature

Analog



P530

M-Bus



Energy meter



Water meter

Impuls



Gas meter



Energy meter

Modbus



CAM



DM5S



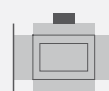
APLUS



Gas meter





Energy meter



Flow

Heat, flow rate, gas

GMC INSTRUMENTS

 **GOSSEN METRAWATT**
 **CAMILLE BAUER**

Camille Bauer Metrawatt AG
Aargauerstrasse 7 ■ 5610 Wohlen ■ Switzerland
TEL +41 56 618 21 11 ■ FAX +41 56 618 21 21

www.camillebauer.com ■ info@cbmag.com